

Campbell Scientific control system for an Absolute Cavity Radiometer.

Josh Peterson
Rich Kessler
Frank Vignola
2021-06-15

The University of Oregon Solar Radiation Monitoring Lab (UO SRML) recently upgraded the control system for its Absolute Cavity Radiometer (ACR) to a controller designed and developed by Campbell Scientific Incorporated. This white paper describes the new system and summarizes several of the initial results.

The SRML is a regional solar radiation data center. The goal of the lab is to provide high quality solar resource data for planning, design, deployment, and operation of solar electric facilities in the Pacific Northwest United States. The SRML began operation in 1975 with a simple need to understand the solar resource in the region. Since that time, it has developed into one of the premier monitoring networks in the country.

The SRML currently consists of fourteen monitoring stations located in Oregon and Washington. At all of these stations, there are a variety of pyranometers and pyrhemimeters of various makes and models. These instruments are used to measure the Global Horizontal Irradiance (GHI), Diffuse Horizontal Irradiance (DHI) and Direct Normal Irradiance (DNI). These three components of light are related through the component sum equation (Eq. 1)

$$GHI = DNI \cos(SZA) + DHI \quad \text{Eq. 1}$$

Where SZA is the solar zenith angle.

To maintain data quality, each of these sensors is calibrated once a year. For calibrations the SRML uses an Absolute Cavity Radiometer (ACR) manufactured by

the Eppley Laboratory Inc. The ACR makes a high-quality measurement of the direct normal irradiance. The calibration of the SRML ACR is performed annually at the National Pyrheliometer Comparison (NPC) calibration event held in Golden CO. This ensures the calibration is traceable to the world reference standard.

A photograph of the absolute cavity radiometer is shown in Figure 1. The ACR is a cylindrical type of device mounted to a two-axis sun tracker. The aperture of the instrument is directly facing the sun. At the back of the collimated tube is a thermopile sensor that is heated by the incident radiation.

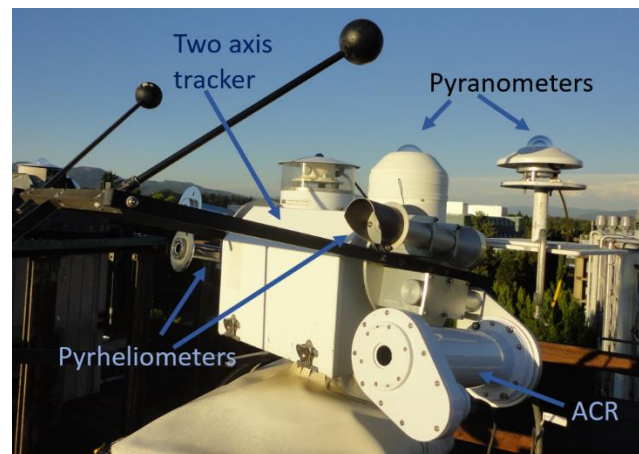


Figure 1. Photograph of the ACR during a calibration in Eugene OR. The ACR is mounted on a two-axis tracker that follows the sun throughout the day.

The ACR is a self-calibrating instrument that is intermittently calibrated between trial runs. During the calibration process, a shutter blocks the light from reaching the thermopile sensor and the sensor is internally heated

using a resistance heater. The electrical power requirements of the heater are recorded and a correlation between the thermopile temperature to power is determined. Following the ACR self-calibration, the shutter is opened and the sensor again faces direct light, where the temperature of the thermopile is recorded. This is an active measurement technique, which is significantly more involved than simply recording the voltage signal of an instrument such as traditional pyrometer.

The control system for the ACR consists of the following important features:

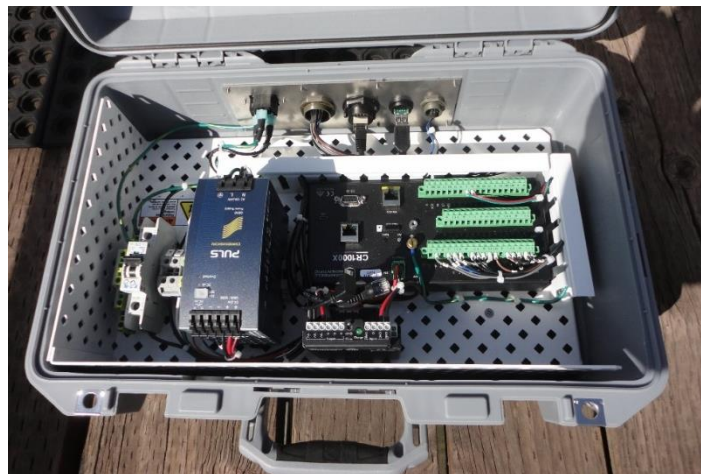
1. A high-quality measurement of the output voltage from the ACR thermopile
2. A control system to heat the ACR during self-calibration
3. A timing mechanism to control the timing of the entire process
4. A processor to compute various parameters
5. A way to display and record the results

In previous years, the SRML operated the ACR using an external control unit. In 2019 the multimeter component of the control unit failed and the manufacturer no longer maintains the product.

It was necessary for the SRML to find a suitable replacement controller. At which point, we contacted Campbell Scientific Incorporated (CSI) for assistance. The CSI solution to these problems was an elegant, self-contained control unit. The heart of the control unit is a CR1000X data logger. The data logger has the ability to control the timing of opening and closing of the shutter and the turning on and off of the ACR internal heater. The data logger records the thermopile voltage and processes the data to convert voltages to solar radiation data.

Basically everything the multimeter and laptop did combined in the previous system. For more details on the CSI control system see [1].

The data logger, power supply, breakers, and other small electronics are all contained in a conveniently sized case. There are a number of communication options installed with easy access through connectors on the outside of the case along with all of the other cable connectors needed to run the system. The new system is significantly smaller and more portable than the previous system. A



photograph of the new control system is shown in Figure 2.

Figure 2. Photograph of the ACR control system. The CR1000x data logger is located on the right side. The power supply for the heater is located to the left of the data logger. The connection ports are located at the top of the photograph

To operate the ACR using the new system, CSI's Loggernet software program is started and the computer is connected to the CR1000X data logger. Once the program is running on the logger, we open the Real-Time Monitoring and Control Software (RTMC) Run-Time window in Loggernet. This screen allows us to adjust parameters such as start time, frequency of

measurements, and timing of the calibration process. RTMC also allows us to also view the data that is being collected and stored in the data logger memory. While the data logger program is running data can be sent to a file stored on the laptop computer as it is being recorded.

A screen shot of the setup screen and runtime screen are shown in Figure 3. The new system is user friendly and intuitive, making it very useful. Also the primary control parameters are all adjustable from these two control screens.

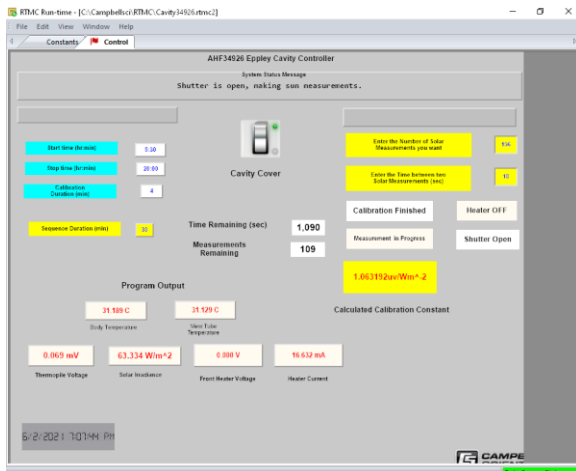
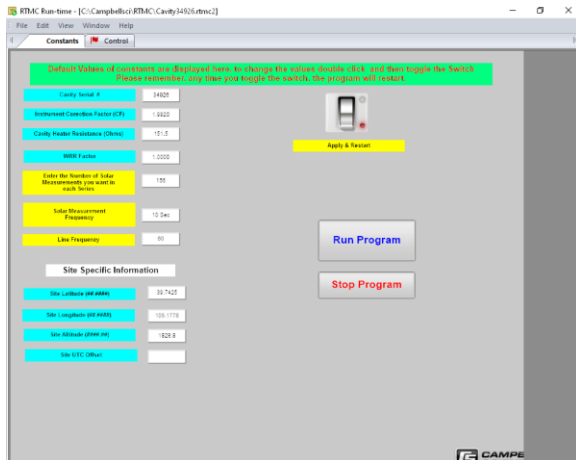


Figure 3. Screen shots of the RTMC Run-Time control windows. On the top is the initial setup screen. On the bottom is the main display used during operation. Note that the irradiance is directly displayed to the user.

With the new system, a slight modification of the program would allow operation of the ACR without the use of the Laptop computer. However this would not allow visualization of the data in real time. Real time data visualization is critical to ensure that the calibration is going as planned.

The goal of a calibration is to determine the responsivity of an instrument. The output of the pyranometer is compared to the output of a reference instrument. In this case the reference instrument is the ACR. Because the ACR now has a new control system, the values output by the ACR are not guaranteed to be the same as they would have been with the previous system.

The responsivity of the instrument being calibrated is determined using Equation 2.

$$R = \frac{V}{DNI_{Ref}} \quad \text{Eq. 2}$$

Where R is the responsivity of the instrument being calibrated. The responsivity is the conversion factor between light and voltage with units of $V/(W/m^2)$. V is the millivolt signal from the instrument being calibrated. DNI_{Ref} is the reference DNI value from the ACR.

The responsivity of the instrument is computed from 10 second data when the sun is at a zenith angle range of 42.5-47.5°. The responsivity of the instrument is the average of all the measurements in the zenith angle range. The responsivity of a pyranometer can be determined using a shade/unshade calibration technique. Further details of how calibrations are performed are beyond the scope of this paper. See [2] for more details.

The results of the first trials of the ACR with the Campbell Scientific control system are presented in the Figures 4 and 5. Results prior to 2021 are for the previous control system.

The instruments used in this calibration were quite stable, meaning that the responsivity of the instruments do not change significantly from year to year. In this initial round of testing, the SRML was looking to see if the responsivity of the instrument was the same using the new control system compared to the previous system. Since the calibration results using the new control system match the previous calibration results, this implies that the new control system is producing results similar to the previous system.

In September 2021, the SRML intends on attending the international pyrheliometer intercomparison (IPC). This event is held every 5 years and will be the true test of the ACR with the Campbell control system. The comparison of the ACR with the world reference standards at the IPC will provide an exacting test of the new Campbell control system.

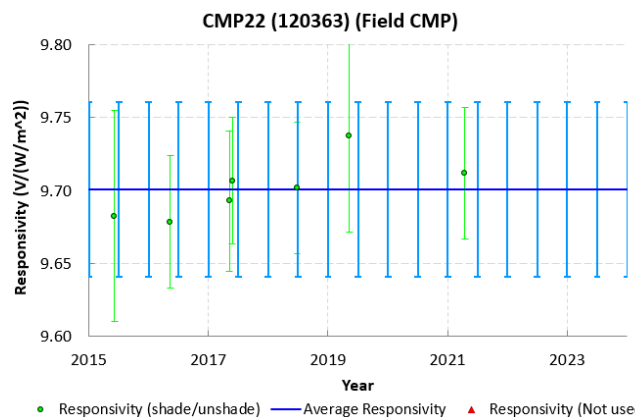


Figure 4. Plot of responsivity of CMP22 vs time. The CMP22 is pyranometer that makes a measurement of a large field of view. To calibrate a pyranometer, the calibration is performed using a shade/unshade calibration technique.

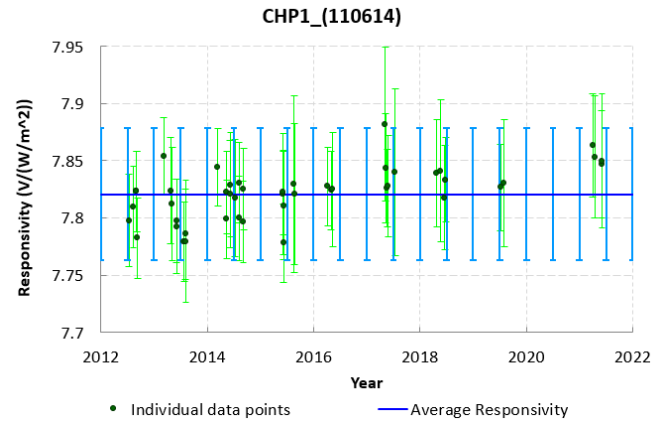


Figure 5. Plot of responsivity of CHP1 vs time. The CHP1 is a pyrheliometer that makes a direct normal measurement. A comparison with the ACR can be made directly as both instruments measure DNI.

References:

1. A. Singh and M. Perry, "Development of a new controller for absolute cavity radiometer for cavity calibration and solar irradiance measurement," 2016 IEEE 43rd Photovoltaic Specialists Conference (PVSC), 2016, pp. 1013-1015, doi: 10.1109/PVSC.2016.7749763.
2. Frank Vignola, Joseph Michalsky, Tom Stoffel, 2019. Solar and Infrared Radiation Measurements, Taylor and Francis Group.